

# Mepilex® Ag



## THE EFFECTIVE ANTIMICROBIAL ABSORBENT FOAM DRESSING WITH SAFETAC® TECHNOLOGY

- Minimizes pain and trauma at dressing changes<sup>1,2</sup>
- Rapid and sustained antimicrobial activity<sup>3</sup>
- Gentle adherence with better conformability and comfort
- Does not slip under dressing retention and may easily be cut for customization

### Safetac® technology layer

- Reduces pain and trauma during dressing change<sup>1</sup>
- Does not adhere to the moist wound bed but to dry skin only
- Seals the wound margins and reduces risk of maceration<sup>3</sup>

### Polyurethane foam pad

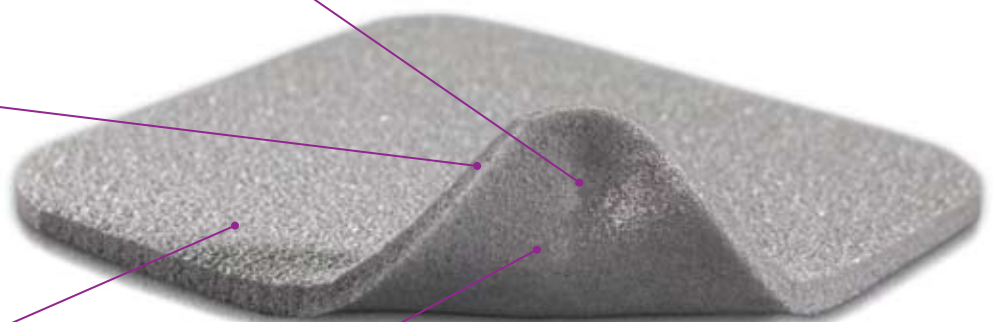
- Absorbs exudate
- Conformable
- May be used under compression

### Polyurethane backing film

- Breathable
- Moisture proof
- Bacteria and viral barrier†

### Powerful silver performance

- Antimicrobial activity within 30 minutes and sustained effect for up to 7 days<sup>3</sup>



**Safetac®**  
TECHNOLOGY

Also available in heel configuration

### Safetac® technology

#### Safetac technology: Less pain and less trauma.

Safetac is a patented adhesive technology that minimizes pain to patients and trauma to wounds. Safetac technology is available exclusively on Mölnlycke Health Care dressings, including Mepilex® wound care dressings, Mepitel®, Mepiform® and Mepitac®.

For more information visit [www.molnlycke.us](http://www.molnlycke.us)

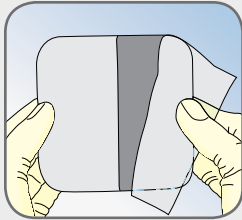


Skin stripping occurs with traditional adhesive

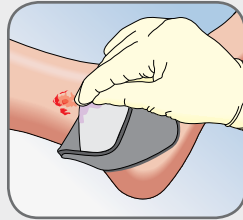


No skin stripping occurs with Safetac technology

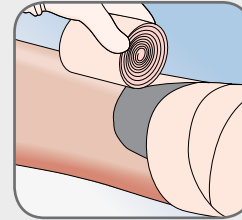
## How to use Mepilex® Ag



Clean the wound area. Cut for customization, if desired. Remove the larger release film.

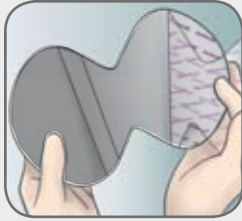


Mepilex Ag should overlap the wound bed by at least 2 cm onto the surrounding skin. Apply the adherent side to the wound. Remove the shorter release film and mold the dressing in place. Do not stretch.



Hold Mepilex Ag securely in place with a light bandage or other dressing retention method (e.g., Tubigrip®, Tubifast®, etc.)

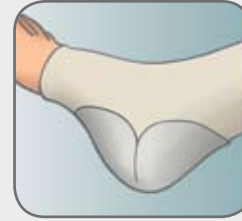
## How to use Mepilex® Heel Ag



Clean the wound area. Cut for customization, if desired. Remove the larger release film.



Fix the dressing under the foot. Remove the shorter release film. Mold the dressing around the heel and bring edges together. Mepilex Heel Ag should overlap the wound bed by at least 2 cm onto the surrounding skin.



Hold Mepilex Heel Ag securely in place with a light bandage or other dressing retention method (e.g., Tubigrip®, Tubifast®, etc.)

## How Mepilex Ag dressings work

Mepilex Ag is a soft and highly conformable antimicrobial foam dressing that absorbs exudate and maintains a moist wound environment. The Safetac layer seals the wound edges, preventing the exudate from leaking onto the surrounding skin, thus minimizing the risk of maceration. The Safetac layer ensures that the dressing can be changed without damaging the wound or surrounding skin or exposing the patient to additional pain.

Mepilex Ag inactivates wound related pathogens within 30 minutes with sustained effect up to 7 days. By reducing the number of microorganisms, Mepilex Ag may also reduce odor.

## Benefits of Mepilex Ag

- Minimizes pain and trauma at dressing changes
- Stays in place allowing easy application of compression or retention bandages
- Well suited for use under compression bandages
- May be cut to suit various wound shapes and difficult-to-dress locations
- Promotes patient comfort during wear
- May remain in place for several days depending on the condition of the wound
- May be lifted and adjusted without losing its adherent properties
- Low potential for skin irritation and allergy

## Areas of use

- Moderately exuding wounds
- Leg and foot ulcers
- Pressure ulcers
- Under compression
- Graft and donor sites
- Traumatic wounds (e.g., skin tears and secondary healing wounds)

**Wear time:** Up to 7 days



5550 Peachtree Parkway, Suite 500, Norcross, GA 30092 | 800.882.4582 | www.molnlycke.us | www.mhcwoundcare.com

The Mölnlycke Health Care, Mepilex, Mepitel, Mepiform, Mepitac, Tubigrip, Tubifast, and Safetac, names and respective logos are registered trademarks of Mölnlycke Health Care AB. Distributed by Mölnlycke Health Care US, LLC, Norcross, Georgia 30092. © 2010. Mölnlycke Health Care AB. 1.800.882.4582.

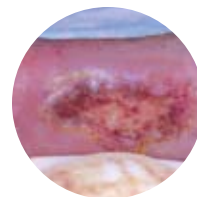
## Mepilex® Ag Ordering Information

Packaged sterile in single packs.

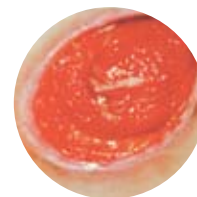
Product Code	Size	Pieces/box	Pieces/case	HCPCS
287100	4" x 4" (10 x 10 cm)	5	70	A6209
287200	4" x 8" (10 x 20 cm)	5	45	A6210
287300	6" x 6" (15 x 15 cm)	5	25	A6210
287400	8" x 8" (20 x 20 cm)	5	20	A6211
287500	8" x 20" (20 x 50 cm)	2	10	A6211

## Mepilex® Heel Ag

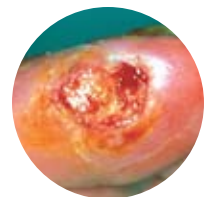
388390	6" x 8.8" (15 x 22 cm)	5	30	A6211
--------	------------------------	---	----	-------



Lower extremity ulcers



Pressure ulcers



Diabetic ulcer

## Precautions

- Do not use on patients with a known sensitivity to silver.
- Do not use Mepilex Ag or Mepilex Heel Ag during radiation treatment or examinations e.g., X-ray, ultrasound, diathermy or Magnetic Resonance Imaging.
- Do not use Mepilex Ag or Mepilex Heel Ag together with oxidizing agents such as hypochlorite solutions or hydrogen peroxide.

### References:

1. White R., A Multinational survey of the assessment of pain when removing dressings. Wounds UK 2008; Vol 4, No 1.
2. Dykes PJ et al. Effects of adhesive dressings on the stratum corneum of the skin. J Wound Care 2001; 10(2):7-10.
3. Dykes PJ. The effect of adhesive dressing edges on cutaneous irritancy and skin barrier function. J Wound Care 2007, 16(3):97-100.

† Microbes larger than 25 nm.



US037061010 - 270255 10.10