

Mepilex®

THE ABSORBENT SOFT SILICONE FOAM DRESSING

Mepilex effectively absorbs moderate amounts of exudate.



SafetaC
TECHNOLOGY

Foam pad

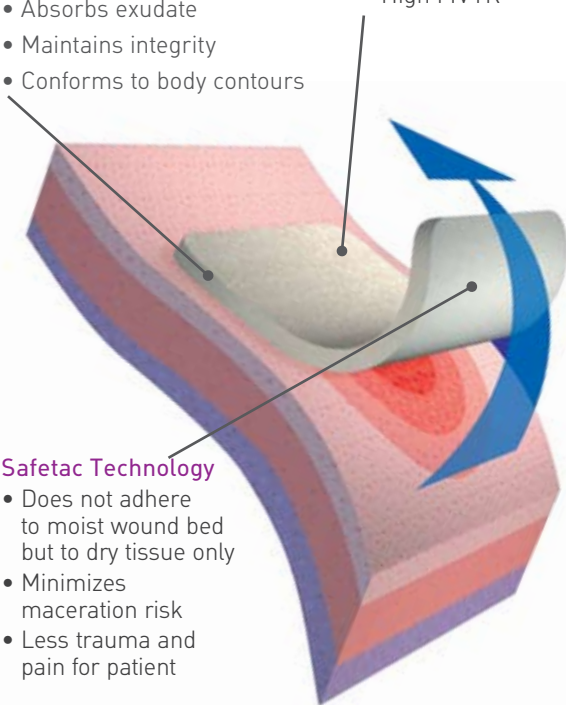
- Absorbs exudate
- Maintains integrity
- Conforms to body contours

Film backing

- Moisture resistant
- High MVTR

Safetac Technology

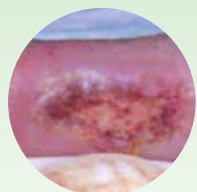
- Does not adhere to moist wound bed but to dry tissue only
- Minimizes maceration risk
- Less trauma and pain for patient



BENEFITS OF MEPILEX

- Atraumatic to the wound and surrounding skin upon removal
- Promotes patient comfort during wear
- May be lifted and adjusted without losing its adherent properties
- Minimizes the risk of maceration
- May remain in place for several days depending on the condition of the wound
- May be used under compression bandages
- May be cut to size
- Easy to apply

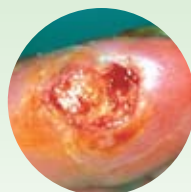
Mepilex®



Lower extremity ulcers

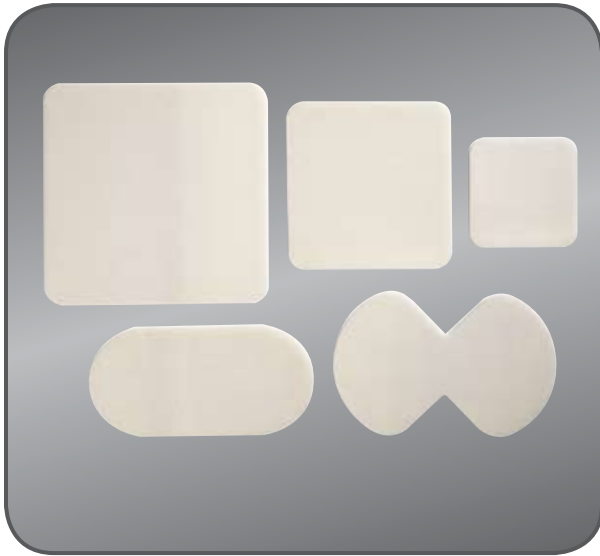


Pressure ulcers



Neuropathic ulcer

Please note new product codes on reverse side.



HOW MEPILEX® WORKS

Mepilex minimizes both trauma to the wound and pain to the patient during dressing changes. The **Safetac** layer prevents Mepilex from sticking to the moist wound bed yet it adheres gently to the surrounding skin. The gentle adhesion frees both hands for easy application of secondary fixation. Mepilex absorbs effectively and ensures a low risk of maceration.

AREAS OF USE

- Moderately exuding wounds
- Pressure ulcers
- Graft and donor sites
- Traumatic wounds (e.g., skin tears and secondary healing wounds).
- Leg and foot ulcers
- Under compression

WEAR TIME: Up to 7 days

HOW TO USE MEPILEX



Clean the wound area.
Remove the release film.



Mepilex should overlap the wound bed by at least 2 cm onto the surrounding skin. Apply the adherent side to the wound. Do not stretch.



When necessary, secure Mepilex with a bandage or other fixation.

MEPILEX ORDERING INFORMATION

Packaged sterile in single packs.

CURRENT Product Code	NEW Product Code	Product Size	Pieces/box	CURRENT Pieces/case	NEW Pieces/case	HCPCS
294190	294199	4" x 4" (10 x 10 cm)	5	60	70	A6209
294290	294299	4" x 8" (10 x 20 cm)	5	30	45	A6210
294390	294399	6" x 6" (15 x 15 cm)	5	30	25	A6210
294490	294499	8" x 8" (20 x 20 cm)	5	30	20	A6211

Transition to NEW codes starts in November and December 2009



MÖLNLYCKE®
HEALTH CARE



5550 Peachtree Parkway, Suite 500, Norcross, GA 30092 | 800.882.4582 | www.molnlycke.us | www.mhcwoundcare.com

The Mölnlycke Health Care, Mepilex, and Safetac, names and respective logos are registered trademarks of Mölnlycke Health Care AB. Distributed by Mölnlycke Health Care US, LLC, Norcross, Georgia 30092. © 2009. Mölnlycke Health Care AB. 1.800.882.4582.

US006020805 - 200102 10.09